



SUBURBAN RAMSEY FAMILY COLLABORATIVE

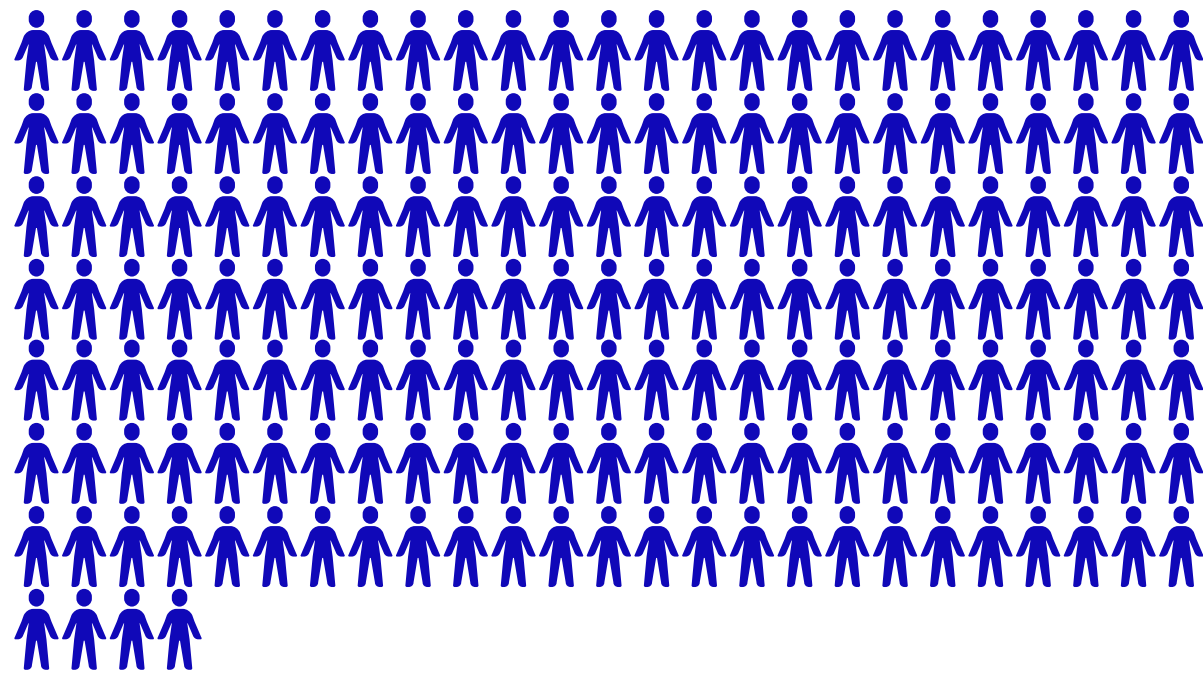
**WE ARE
BETTER AND
STRONGER
TOGETHER**

2022-2023 Collective Impact Report

OUR MISSION

Connecting individuals, families and community resources to create relationships which enhance the well-being of our kids; cradle to career.

3,523 People Served



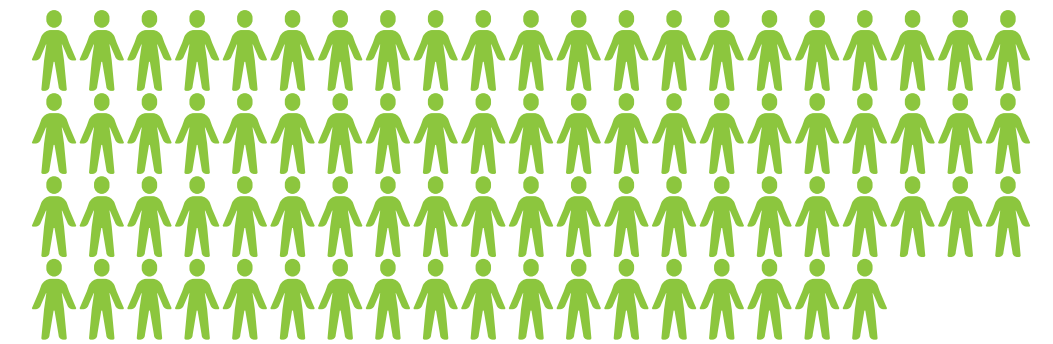
LEARNING
1,790 SERVED

- Youth-led Initiatives
- Resource Events



HEALTH
925 SERVED

- Support Groups
- School-Linked Mental Health



SAFETY/SECURITY
808 SERVED

- Community Social Workers/
Community Resource
Navigators
- Cultural Brokers

People served: Demographically Diverse, Financially At-Risk

- Black or African American
- Latino/
- Asian
- White
- American Indian or Alaska Native
- Other



5 of 16 grantees serve youth who identified as transgender or nonbinary youth

83% financially at-risk



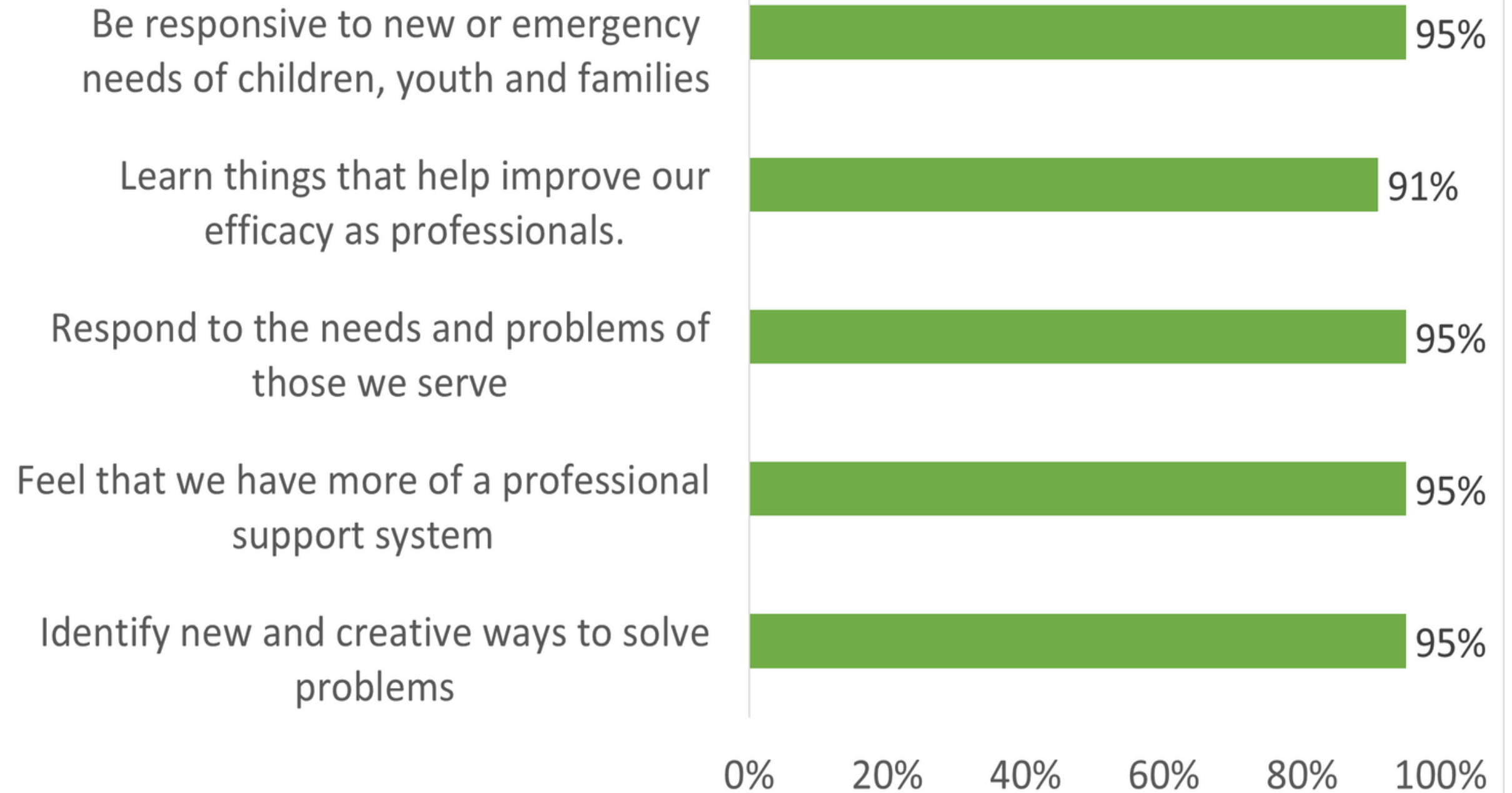
“SRFC listens and understands the gaps of services in our community. [Leadership] advocates for strong collaboration between communities to bridge the gaps of the underserved. We feel empowered and supported by the SRFC team and the collaboration of the partnering agencies. We have been able to advance the well-being of the families in our communities as a group by providing wrap around services.”

- CRN Staff at CLUES

SRFC PARTNER SURVEY

“This is a powerhouse collaboration that brings in organizations who need these connections, like mine, but who probably wouldn't be making them without these amazing events, programs, and informational exchanges”

SRFC STAFF AND PARTNERS HELP US...



Taken from a survey of 22 partners, including school, agency, foundation, collaborative, and county organizations

Read more responses from the partner survey [here](#)

HEALTH

925 Served

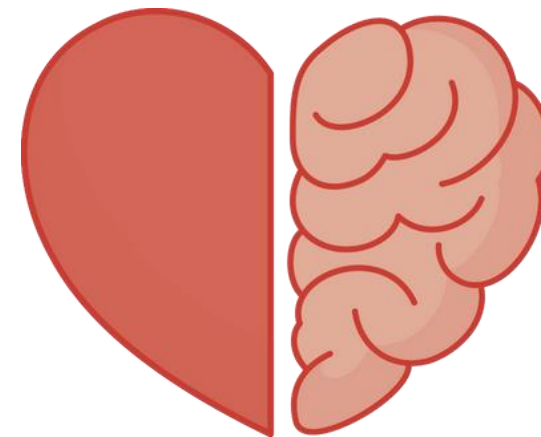
through support groups and school-linked mental health (SLMH)



100%

felt more in solidarity with people from other BIPOC communities

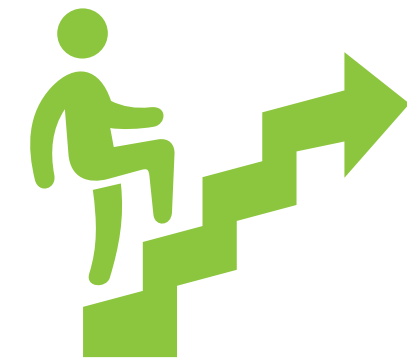
after BIPOC Youth Conference at ISD 624, "Transforming, Healing, Self-Determination, Solidarity: Our Stories are Our Power"



86%

felt more in control of life and feelings

After Latino/a Parent and Youth Support Groups



75%

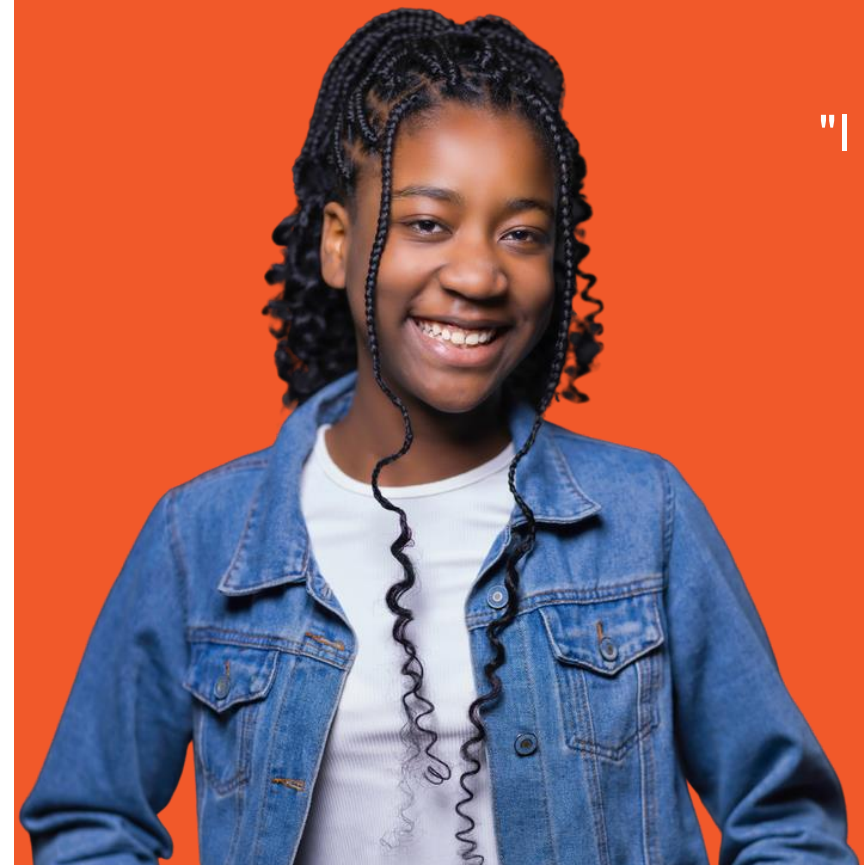
families report significant improvement in daily life

After working with a school-linked mental health therapist for 1 month or more

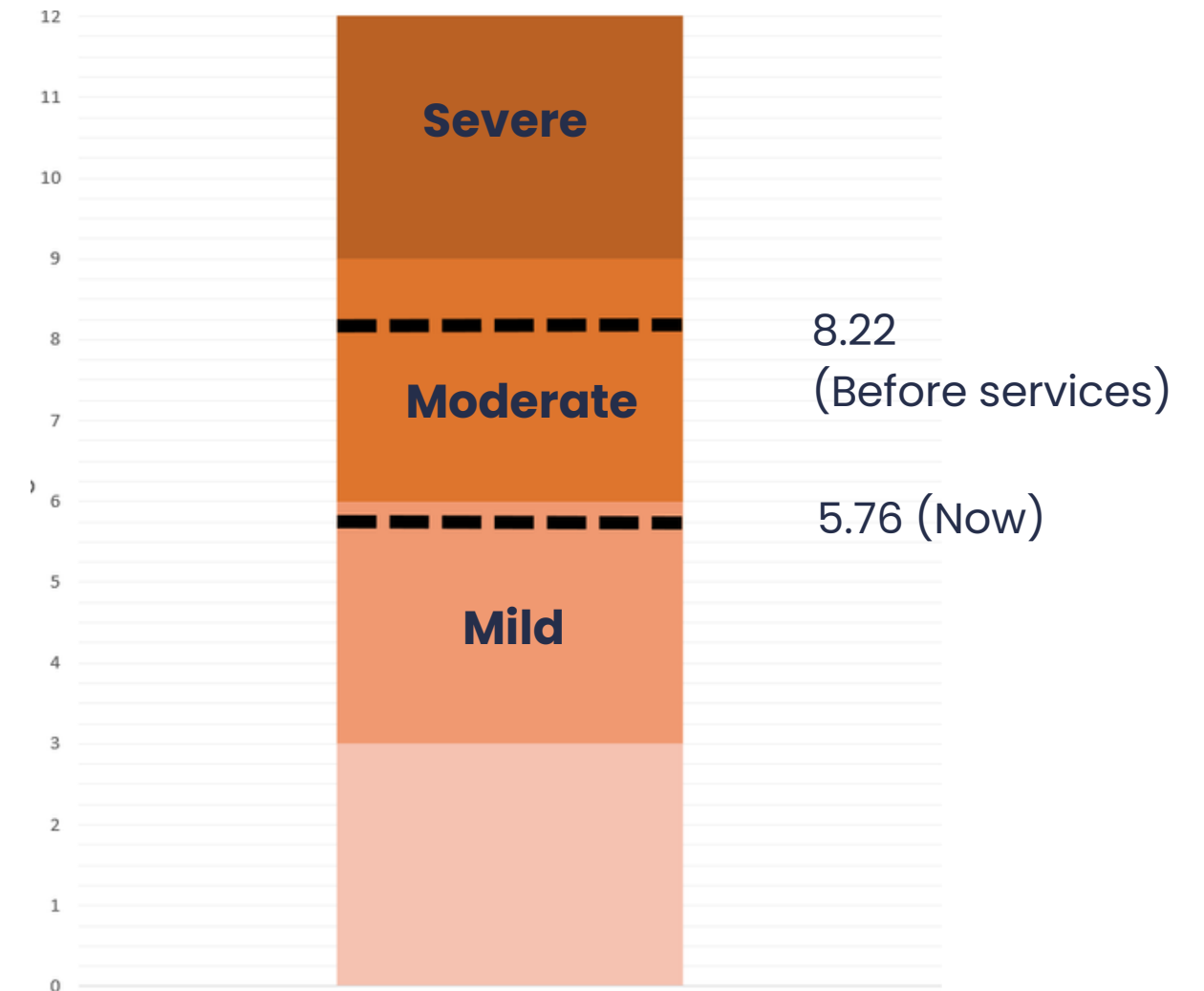
At Gen2Gen Groups at ISD622 Depression & Anxiety Decrease to Mild Levels

One student was not attending school and was getting in fights. This student would bring her issues to group and would be able to talk them through and learn the skills she needed to appropriately deal with conflict and has not gotten in any more fights. She also started attending school more regularly and never missed a group session.

"I love the group and I would like to be in this group in my 10th grade year."



MSS School-Linked Mental Health clients' Depression & Anxiety Decrease to Mild Levels



Clients at Metro Social Services, a SLMH provider, report a decrease in depression & anxiety from moderate to mild symptoms (a reduction on the PHQ-4 from 8.22 out of 12 to 5.76 out of 12)

Based on a survey of 46 clients reflecting on symptoms before they started services and now.

Additional impact statements and quotes from participants in 2022-2023 are available [here](#)

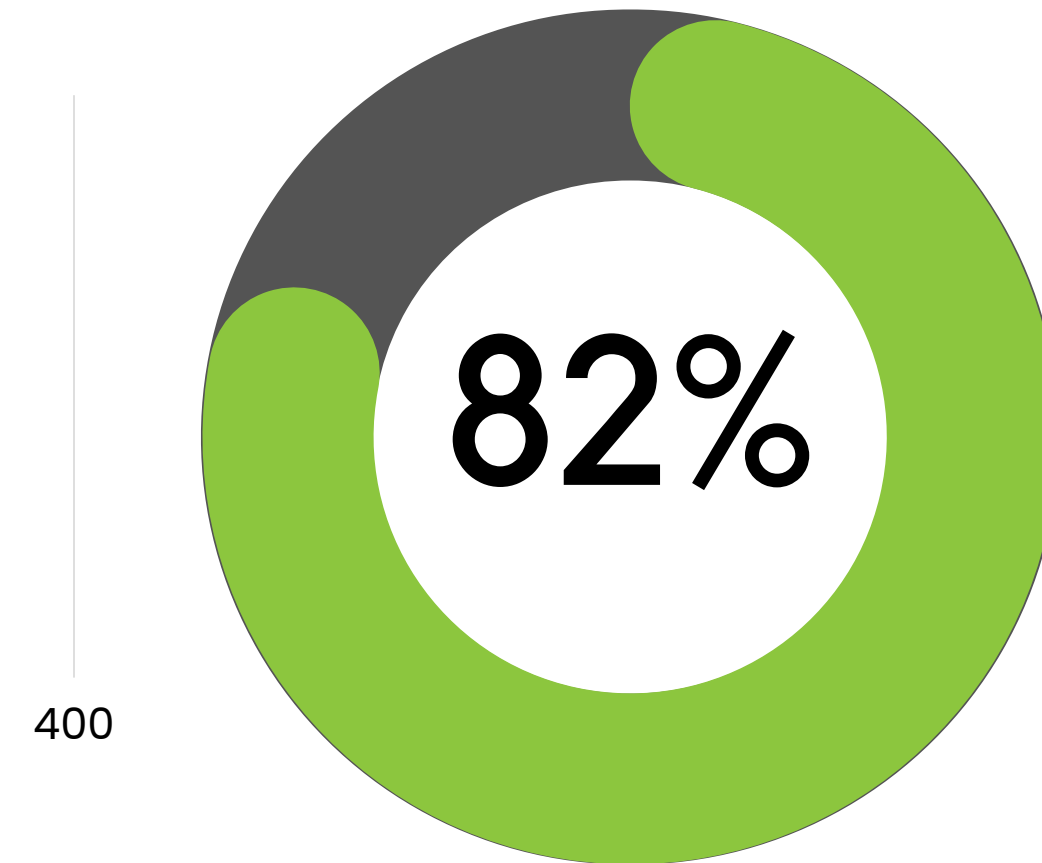
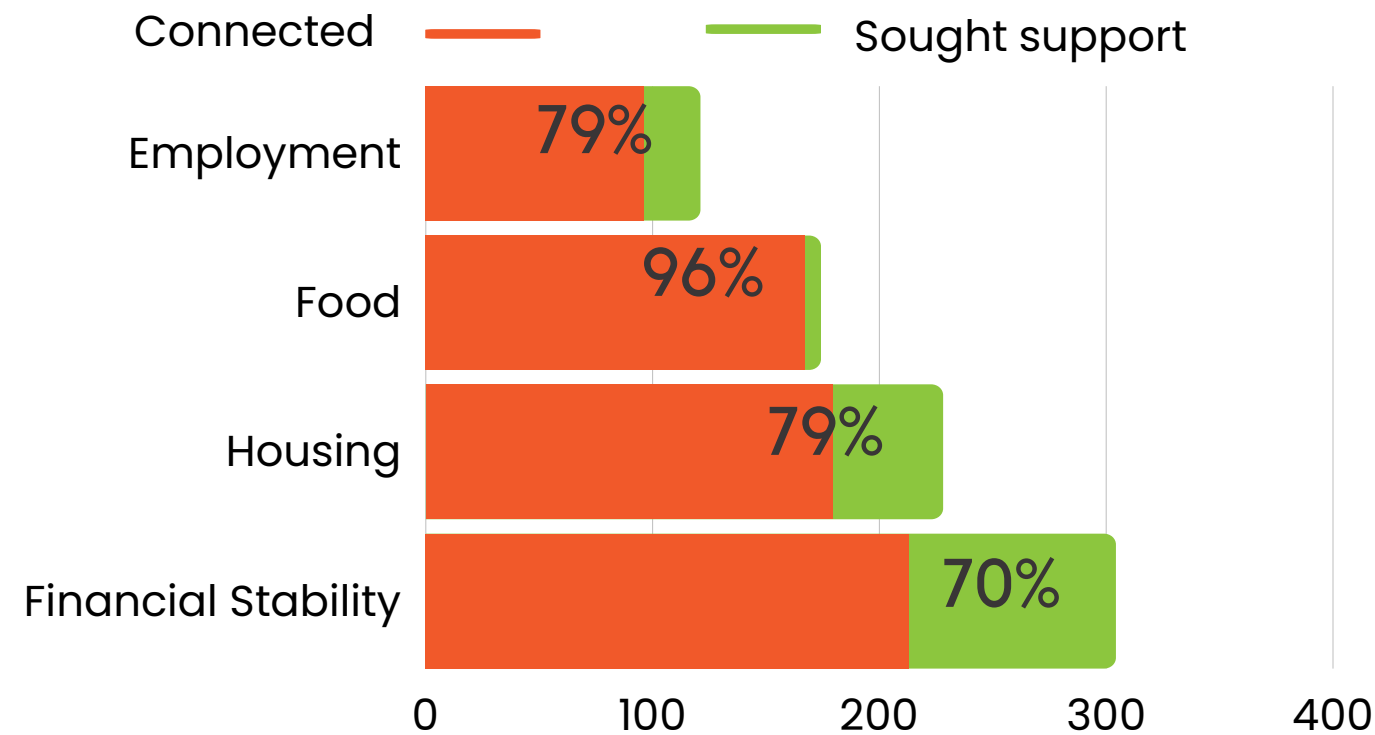
See more
Health
outcomes [here](#)

SAFETY & SECURITY

808 Families Served



through community social workers, community resource navigators, and cultural brokers



CONNECTED WITH NEEDED SUPPORT

On average, across CSW/CRN and Cultural Broker reports



DECREASED STRESS

Based on a survey completed by 45% of MHealth Cultural Broker clients

CONNECTED WITH NEEDED SUPPORT

Based on CSW/CRN records review across 3 agencies

School staff agree, after working with a CSW/CRN Students improve in

School performance	56%
School attendance	52%
Stability	68%
Family engagement	68%

Based on an anonymous survey of 25 staff

**"The community resource navigator role is invaluable!!!
We cannot lose this service for our schools"**

-School Staff

Learn more
Safety/Security
outcomes [here](#)



LEARNING

1,790 Served



through student-led initiatives, Marnita's Table & CAB events, and Resource Fairs



100+

students who had not been interested in college are now considering it

after student college visits and post-secondary planning groups planned by peers



100%

students want to continue this work

Among Latinos Unidos Middle School Leadership Conference planners, based on a survey with 95% response rate, and among IZI participants



8

Community Resource Fairs & Events held



Employers said this is one of the best job fairs they've been to and everyone in the space was joyous; the energy was electric, super positive and very community centered.

The IZI is one of the few times we see our school community actually integrated; because the diverse student population often form social groups by race.

*-Student Hospitality Guide,
Irondale High School*



See more
Learning
outcomes [here](#)

LCTS FY 22-23
Funds Leveraged

\$1.3M

for school-linked
services

SRFC helped support another \$3.3M in multi-year direct service grants through DHS and MHFA, totaling \$4.5M in leveraged resources for Suburban Ramsey County!

CUMULATIVE IMPACT

Since 1998, SRFC allocated \$4.2M in partner contributions for SRFC Operations and in turn...

Allocated \$23.3M in LCTS Funding

Raised over \$30M for added direct services

Served 138,340 children, youth and families

Cultivated over 700 strategic partnerships

Trained 900 partners in Marnita's Table IZI model

Leveraged a total of...

\$50.2M

in direct services for
Suburban Ramsey
County