

SUBURBAN RAMSEY FAMILY COLLABORATIVE (SRFC) 2018-2019 COLLECTIVE IMPACT REPORT

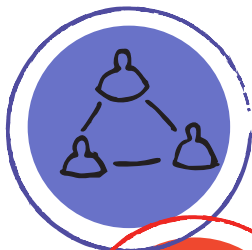
OUR MISSION: Connecting individuals, families and community resources to create relationships which enhance the well-being of our kids.

The question we use to guide transformational systems change is

“How Are The Children?”

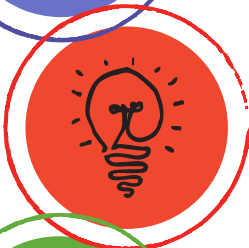


It includes the following components of action:



COMPLEX-ADAPTIVE SYSTEMS THINKING

Adapting rules to address the whole system, its intersections and relationships between the parts that affect children, youth and families.



SHIFTING MENTAL MODELS

Checking in on how our assumptions, beliefs and generalizations may cause harm and shifting our behaviors and actions to repair and restore trust.



VISION AND POWER SHARING

Growing cross cultural and inter-disciplinary partnerships and connections to share power; bust barriers and heal relationships in order to change policies, practices and how resources flow.



PERSONAL INVESTMENT IN EQUITY

Deepening our commitment to consciously address the circumstances and conditions that keep children, youth and families from experiencing the fullness of health, learning, safety and security.



COMMUNITY AND PEER LEARNING

Aligning, supporting and developing the capacities of every network to create and sustain meaningful impact.



COORDINATORS & CONNECTORS

As **COORDINATORS OF THE SYSTEM OF CARE, SRFC INCREASES AND CONNECTS FORMAL RESOURCES TO SCHOOL-LINKED SERVICES** providing a vital pathway of access for children/youth and families in Suburban Ramsey County.

REDUCING SOURCES OF STRESS*

School-Linked Intensive Mental Health (IMH)

Providing treatment and support to help students reduce the sources of stress that prevent school success.



Served 366 students (of which, 34% received mental health services for the first time, most were under-insured and 23% were uninsured)



100% of youth served are satisfied with their therapist

"I am learning to deal with issues and cope with anxiety better." (Student)

98% of youth and parents feel it's important to receive services at school

"Counseling for my son has been critical for his academic success. My son refused therapy off campus but has been able to participate actively in the school setting. These services have been so very helpful to our family." (Parent)

92% of youth and parents feel the services have made a positive difference in their lives/child's life

"I need to talk to someone during school if something happened. It's very accessible and reliable." (Student)



Parent and Youth Surveys

Indicate:

	Parent	Student
Therapist understands your concerns	90%	96%
Satisfied with the courtesy and respect	97%	100%
Made a positive difference in your/child's life	93%	96%
Better relationship with family	73%	58%
Better school performance	63%	69%
Better relationship with school staff	40%	68%
Important to receive services at school	94%	99%

(N= 77 youth, 31 parents)

SUPPORTING RESPONSIVE RELATIONSHIPS*



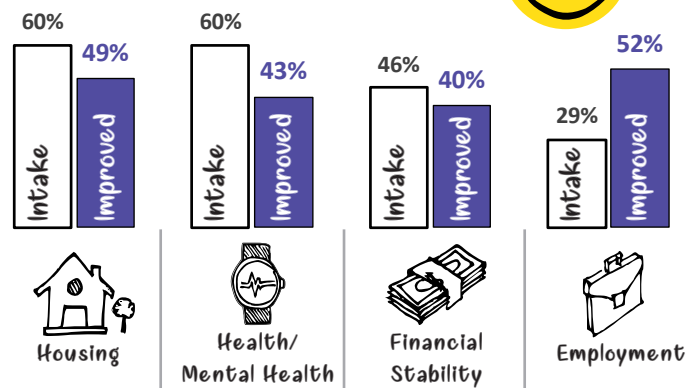
School-Linked Community Social Workers (CSW)

Providing intensive and responsive homeless prevention care management services to help families address highly complex issues in order to improve housing, economic and family stability.

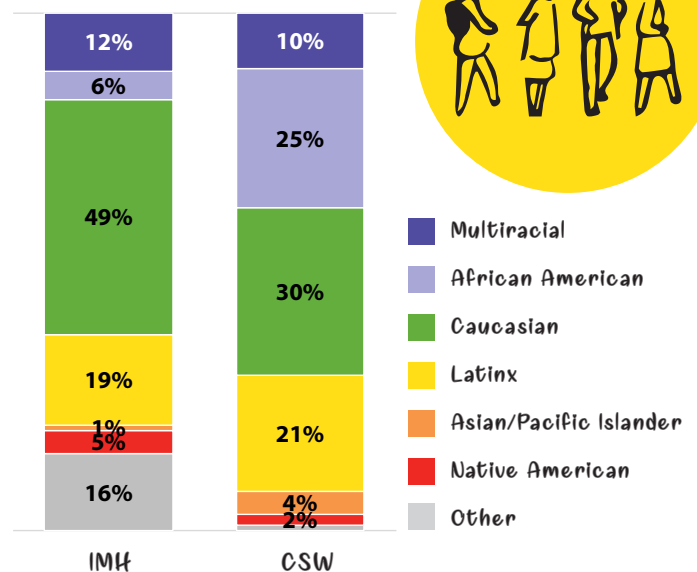
Served 177 families (of which, over half had employment, health/mental health and housing as major barriers they were seeking support to address).

Top 4 Barriers Identified at Intake and Improved from Crisis

(N= 177 families)



IMH AND CSW Demographics



*Three Principles; 1) Reducing Sources of Stress, 2) Supporting Responsive Relationships and 3) Strengthening Core Life Skills, have been identified by the Center on the Developing Child, Harvard University, As The 3 Key Strategies that Improve Outcomes for Children and Families.

CULTIVATORS & BRIDGERS

As **CULTIVATORS OF STRATEGIC PARTNERSHIPS AND BRIDGERS OF SOCIAL CAPITAL** in Suburban Ramsey County, **SRFC INCREASES INFORMAL RESOURCES** for children, youth and families experiencing at-risk circumstances. We cultivate intergenerational, cross-cultural and interdisciplinary partnerships that increase our capacity to transform conditions together.

HEALTH: Healing-Centered Community Engagement

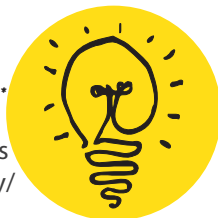
SRFC continues to bring more resiliency-focused/trauma-informed community-care practices to our schools and community.



- **Quarterly Suburban Ramsey-wide 'Be Well IZIs'** (Intentional Social Interaction), in collaboration with MN Communities Caring for Children (MCCC) and Marnita's Table, SRFC supports self-care and self-healing communities to stop the perpetuation of the "Pair of ACES" (Adverse Childhood Experiences and Adverse Community Environments) in our homes, work places and schools.
- **Monthly Countywide Cross-District Crisis Response and De-Escalation Peer Learning Team meetings** focus on sharing best practices that prevent and/or de-escalate crisis in the schools through training and proactive/prosocial school climate strategies.
- **Monthly meetings with the Mental Health and Wellness Action Team (MHWAT)** (a collaboration with St. Paul Ramsey County Public Health) MHWAT works to grow a network of cultural healers who provide the community an array of integrated health resources grounded in cultural healing practices.
- In partnership with the Ramsey County Children's Mental Health Collaborative (RCCMHC), **ongoing exploratory discussions with Children's Crisis Responders to address gaps in the crisis response system for children with acute mental health needs.**
- **Facilitate regular School-Linked IMH & CSW inter-disciplinary team meetings.**

LEARNING: Strengthening Core Life Skills

Youth-Led experiences: SRFC supports initiatives that increase youth's decision making/hospitality/planning and public speaking skills, group facilitation, leadership and community organizing skills.



- **The SRFC Youth Fund** supports Youth-Led/Youth-Engaged IZIs, Youth Photo Voice projects used to foster social change and the Out of School Time Network (OSTN).
- **Youth-Led and Youth-Engaged IZIs** Over 7,000 community members having attended at least one IZI in their school district community. *"Once again, we had the greatest turnout and the most diverse parent participation of any of our events. The impact IZI has on our overall culture and community is moving and powerful. Families immediately feel better connected to the community, school, and other families. (Chris Streiff Oji, Principal, Willow Lane Elementary School)*

SAFETY/SECURITY: Homeless Prevention & Housing Stability

Homeless Prevention and Housing Stability Over 950 students were homeless in Suburban Ramsey County schools in the 2018-19 school year. By understanding that the epidemic of poverty has its roots in systemic racism, we strengthen our partnership with children, youth and families (using a Two-Gen empowerment model), and utilize targeted universalism funding approaches, to address institutional barriers.



"SRFC has a long history of responding to community need, and addressing the dramatic rise in homelessness and housing instability among students in suburban Ramsey County. They have played an important role in the new Homework Starts with Home program; helping to develop and implement the program and encouraging us to apply an equity lens to our work." (Trisha Kauffman, Executive Director of Solid Ground)

- **Monthly Basic Needs Practitioners Peer Learning Team** works together to address complex barriers to housing stability through creative problem solving and teamwork.
- **The Homework Starts with Home grant** seeks to tackle systemic and economic barriers that impede family's ability to permanently move out of poverty.

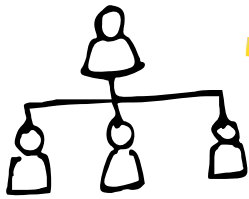
EQUITY

- **SRFC Board/Staff equity and anti-racism work focused on shifting the conditions that hold racism in place** through transformative and structural changes including professional development, cultural healing practices, shifting power dynamics and changing policies, practices and resource flows.
- The SRFC JPB passed a **Compensation Policy for Cultural Equity Advisors, Cultural Healers and Youth Leaders** to formalize a payment and accountability structure for community and youth leadership.
- **Countywide Collaboration with Ramsey County Youthworks**, a partnership with Ramsey County Workforce Services, to raise awareness in the business community about the need for Suburban Ramsey to support volunteer and employment needs of youth, especially youth of color. *"SRFC is an invaluable resource for Roseville scholars and families. From trainings to collaborative meetings, Peggy and Mary Sue are helpful and always look to fill, close, or interrupt gaps all with an equity lens." (Dr. Alecia Mobley, Director, Student Services, Roseville Area Schools)*



SINCE 1998, RECEIVED
\$3.8M IN PARTNER CONTRIBUTIONS
 FOR SRFC OPERATIONS AND IN TURN...

...Leveraged
 a Total of
\$45.4M
 in direct services
 for Suburban
 Ramsey County



Allocated
\$20.9 Million
 in LCFS
 Funding



Raised over
\$24.5 Million
 for added
 direct services



Served **131,185**
 children, youth
 and families



Trained **760** youth
 and adults in the
 Intentional Social
 Interaction (ISI) Model



Cultivated
432 strategic
 partnerships

FY 18-19 EXPENSES: BLENDING PARTNER CONTRIBUTIONS TO ACHIEVE IMPACT*

HEALTH & WELLNESS

25% Staff time

- o IMH service coordination
- o System of Care grant support
- o DHS School Based Mental Health grant support
- o Crisis Response Peer Learning
- o RCCMHC Crisis Response Systems Learning
- o Mental Health & Wellness Action Team

*State, County, & SRFC Core Partners

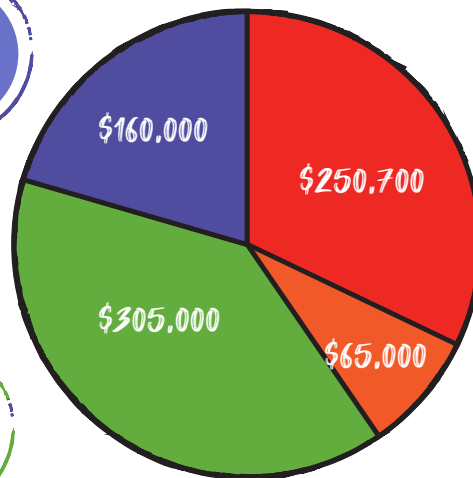


FAMILY SUPPORT & HOUSING STABILITY

25% Staff time

- o CSW service coordination
- o Heading Home SUBURBAN Ramsey Peer Learning Team & Housing Advocacy
- o Homework Starts with Home Advisory & community engagement support
- o Peer Learning/Information & Referral

*State, County, Faith Community & Core Partners



SYSTEMS CHANGE CAPACITY BUILDING

25% Staff time

- o Cultivating new & existing partnerships
- o SRFC administrative duties including partner consultation, grant writing, evaluation, fiscal oversight & board support

*Core Partners



COMMUNITY ENGAGEMENT & LEARNING

25% Staff time

- o Quarterly Be Well IZI planning, implementation & evaluation
- o IZI training & technical assistance
- o OSTN facilitation & coordination
- o 21st Century Learning Center grant evaluation & leadership support

*State, County, Community and Core Partners



THANK YOU

We look forward to many more years of valued partnership.