

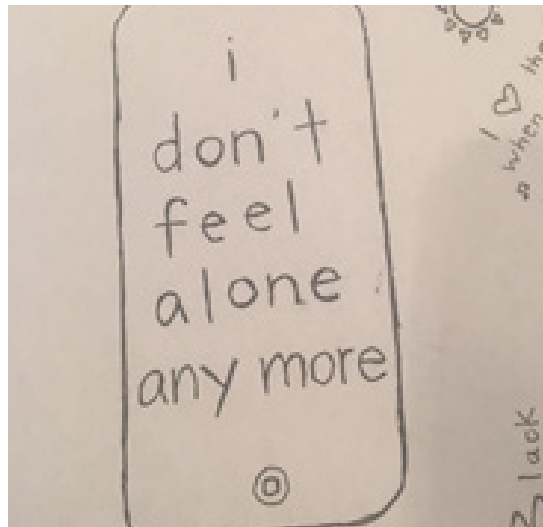


# HOW ARE THE CHILDREN?

SUBURBAN RAMSEY FAMILY COLLABORATIVE (SRFC)

2017-18 COLLECTIVE IMPACT REPORT

OUR MISSION: Connecting individuals, families and community resources to create relationships which enhance the well-being of our kids; cradle to career.





## As BUILDERS and COORDINATORS OF THE SYSTEM OF CARE

in Suburban Ramsey County, SRFC increases **FORMAL** resources. By working with schools as the primary identifier and point of contact, school-linked services connect children, youth and families experiencing at-risk circumstances to critical supports.

**School-Linked Intensive Mental Health (IMH)** provides treatment and support to help students reduce the sources of stress that prevent school success.

### SERVED 430 STUDENTS

(of which, 34% received mental health services for the first time and 36% were uninsured)

**100%** of Youth served are satisfied with their therapist

*"It's been the best thing that's ever happened to me." (Student)*

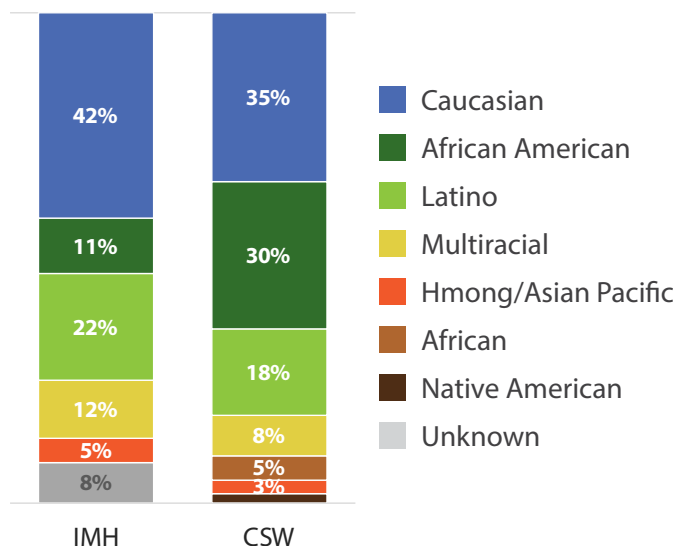
**97%** of Youth and Parents feel the services have made a positive difference in their lives/child's life

*"I've changed from feeling sad, to better." (Student)*

**97%** of Youth and Parents feel it's important to receive services at school

*"Services have been vitally important for my child and our family. Our child refused counseling in a clinical setting. Because these services are part of the school day and in the school building, my son was able to develop a trusting relationship." (Parent)*

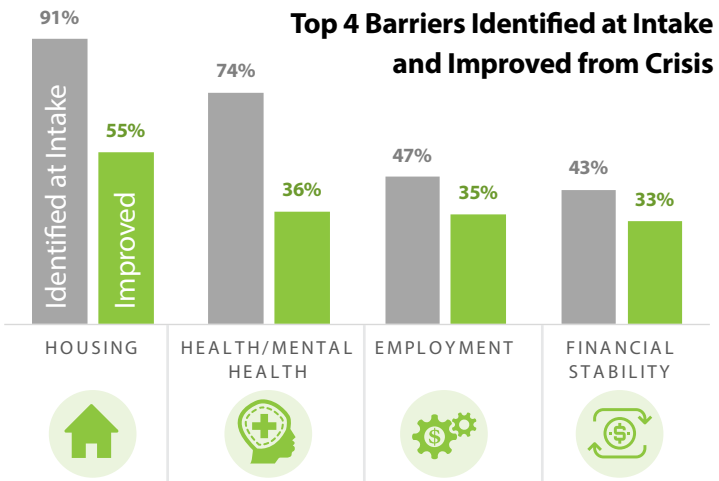
### IMH and CSW Demographics



**School-Linked Community Social Workers (CSW)** provide intensive care management services to help families address complex issues that improve housing, economic and family stability.

### SERVED 169 FAMILIES

#### Top 4 Barriers Identified at Intake and Improved from Crisis



Families are securing safe and stable housing...

*"You helped me find this beautiful home that I never imagined I would ever have. You helped me with my son and the appointments with his psychologist. I am very pleased with everything you have done for me and my son." (Parent)*

Students' quality of life and educational engagement is improving...

*"Improved housing stability leads to improved school attendance as a result of connecting students (and their families) to vital resources." (School Staff)*

Connecting families to resources and supports that help meet their basic needs...

*"You are my guardian angel." (Parent)*

*"I used every resource you provided me with English classes, food resources, and employment resources. You offered me the help, support and motivation in life that I needed to move forward." (Parent)*



As **CATALYZERS OF STRATEGIC PARTNERSHIPS** and **CULTIVATORS OF SOCIAL CAPITAL** in Suburban Ramsey County, SRFC increases **INFORMAL** resources for children, youth and families experiencing at-risk circumstances. We cultivate intergenerational, cross-cultural and interdisciplinary partnerships that increase our capacity to transform lives.

## HEALTH

**Healing-Centered Community Engagement:** SRFC is working to bring more resiliency/trauma-Informed<sup>1</sup> mental health, self-care and restorative practices to our schools and community. This work seeks to increase self-healing, prevent the perpetuation of Adverse Childhood Experiences (ACE) and re-centers culture and community as a central feature in well-being.

- Hosted the viewing of the film **“Resilience”** to support interagency dialogue around planning trauma-informed systems change.
- Facilitated a monthly **Crisis Response and De-Escalation Peer Learning Team** that included site visits, presenters, and focused conversations related to **best practices**.
- Partnered with **St. Paul Ramsey County’s Mental Health and Wellness Action Team** to develop a network of community and cultural healers that will work together to grow healing resources for children, youth and families in our communities.
- Funded **16 Restorative Family Group Decision-Making Conferences** (4 in each school district) as a pilot partnership with the Minneapolis Legal Rights Center.

## LEARNING

**Peer Learning/Action Networks:** In Suburban Ramsey County, it is estimated that 6 out of 10 students are not connected to after school or summer learning opportunities due to responsibilities they have at home or lack of funds to pay activity fees or transportation.

- SRFC teamed with **Youth Advocates** to mobilize the **Suburban Ramsey Out-of-School-Time Network (OSTN)** to share OST resources, support the hiring of a full-time Community Program Director in Youth Development and create an action plan for youth systems change engagement.

<sup>1</sup> Trauma Informed practices promote a culture of safety, empowerment, and healing. Based on brain science, such as neuro-epigenetics, the ACE study, toxic stress and resiliency, there is a shift in consciousness from “What happened to you?” to “What’s right with you?” Practitioners understand the impact of trauma on brain development and learn how to help children, youth and families effectively minimize its effects without causing additional trauma.

<sup>2</sup> A “Two-Gen” approach is an intergenerational strategy that simultaneously builds off of strengths and addresses the needs of parents and their children to improve outcomes for the whole family.

**Youth Engagement and Empowerment:** SRFC knows that in order for youth to innovate and address system barriers, they need adult support in the system to pave their way towards meaningful dialogue and systems change.

- **The SRFC Youth Fund** provides tangible resources such as food, supplies and youth leadership honorariums to support youth advocacy groups, youth theater consultants and Youth-Led/Youth-Engaged IZIs (Intentional Social Interactions).

**Authentic Community Engagement:** SRFC continues to address the relationship gap in our communities across ethnicity, age, class, culture and other means of social identity.

- SRFC continues to offer **Youth-Led and Youth-Engaged IZI training and technical assistance** for over 740 partners (30% are youth).

## SAFETY/SECURITY

**Homeless Prevention and Housing Stability:** 800 students were homeless in Suburban Ramsey County in the 2017-18 school year. By understanding that the epidemic of poverty has its roots in systemic racism we will strengthen our partnership with children, youth and families (using a Two-Gen<sup>1</sup> empowerment model) to work together to address institutional barriers. Collaboratively we will create a Standard of Care which moves *beyond* stabilizing families to helping families move out of poverty.

- SRFC facilitates a monthly Peer Learning Team to support resource sharing and collaboration among **Basic Needs Practitioners in Suburban Ramsey County** where complex barriers are tackled through teamwork and creative problem solving.
- By partnering with the **MN Housing Finance Agency on the “Homework Starts with Home”** grant, we are helping families first stabilize their housing and then tackle the systemic and economic barriers that impede their children’s success in school and their ability to permanently move out of poverty.



# Since 1998, Received \$3.6M IN PARTNER CONTRIBUTIONS FOR SRFC OPERATIONS AND IN TURN...

**Total of  
= \$43.1M**  
in direct services  
for Suburban Ramsey  
communities



**Fundaised over \$22.7M for added direct services.** A 6.3-fold return on investment for services and supports in Suburban Ramsey County



**Received \$20.4M in LCTS<sup>3</sup> funds** for direct services



**Served 128,296** children, youth and their families in direct services



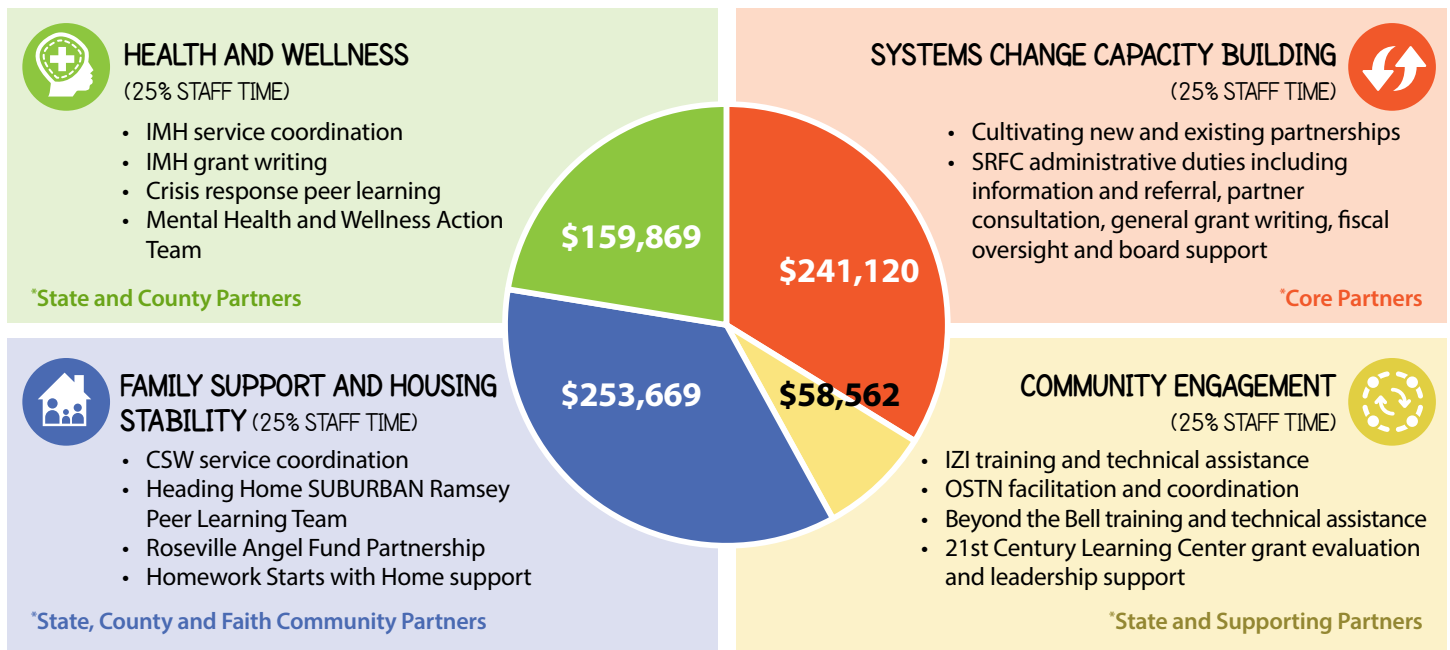
**Trained over 740** adults and youth in the Intentional Social Interaction (IZI) community engagement model



**Cultivated 370** strategic partnerships

## Blending Partner Contributions\* to Achieve Collective Impact

SRFC EXPENSES FY 2017-18 FINANCIAL OVERVIEW



*“SRFC creates deep and enduring value. This is a unique organization with its **finger on the pulse across the entire community.** They have the **commitment and expertise to bring the community together** for concerted social action **so ideas that are community-based are catalyzed into measurable action.** When SRFC speaks or **draws attention to improvements, gaps or needs,** the entire community, both, **systems and individuals, pay attention.**”*  
*(Marnita Schroedl, Marnita’s Table)*

**THANK YOU**  
We look forward to many more years of valued partnership.

[www.HowAreTheChildren.org](http://www.HowAreTheChildren.org)

<sup>3</sup> Local Collaborative Time Study